

Fanshawe College

Air Brake Endorsement Course, Written Examination

Instructions: Please read all the questions carefully. In some questions more than one answer may be a good choice, but only **ONE IS BEST**. To pass you **MUST** answer 80% correctly.

- 1 You are driving a Tractor Trailer along the freeway & you see that both your air pressure gauges (which were at 120psi.) are dropping about 20 lbs. per. min. & the pressure does not go back up. If you keep on driving, what will happen next?
 - A It will become a runaway truck which cannot be stopped.
 - B The spring brakes on the trailer will come on first to stop the truck.
 - C You can stop the truck by using the (DCA) system.
 - D The spring brakes on the tractor will come on first to stop the truck.
 - E The spring brakes on the tractor & trailer will come on together to stop the truck.

- 2 Why is it necessary to drain ALL air tanks when you are finished using the truck for the day?
 - A It is nice to have fresh clean air in the tanks every morning to start the day off right.
 - B To drain the moisture (water, oil) out of the tanks which has collected during the day.
 - C To drain the alcohol which has collected in the tanks from the alcohol injector.
 - D The parking brakes will only work when there is no air in both the air tanks.
 - E None of the above.

- 3 When you are finished using the truck for the day, why is it necessary to drain the WET tank FIRST?
 - A To see if any water comes out of the tank
 - B To see if any oil comes out of it.
 - C To check if the one-way check valves are working & to avoid contamination of the dry tank.
 - D None of the above
 - E Both A & D.

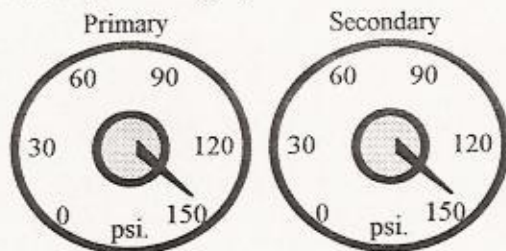
- 4 What is the main reason for having a pressure safety valve on the WET TANK?
 - A To stop the tank & pipes from exploding.
 - B To fill the tanks quickly to save time & money.
 - C To keep the air pressure constant in the tank.
 - D To drain tanks quickly to save time.
 - E All of the above.

- 5 Approximately how much air should be used when you make a light brake application ?
 - A Depends on the condition of the compressor.
 - B None what so ever, only uses air when parking.
 - C 1 lb.
 - D 3 to 10 lbs.
 - E 15 to 25 lbs.

- 18 When driving on the road **WITHOUT the trailer attached** (bobtailing), the **RED button** on the dash board, inside the truck:
- A Must be pulled out.
 - B Must be pushed in.
 - C It does not matter, if it is pushed in or pulled out
 - D ~~Must be left alone or the fifth wheel brake will not work~~

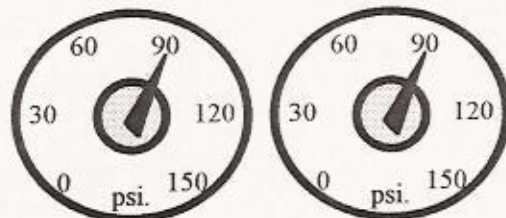
- 11 You are driving down the freeway & you see the primary & secondary air tank gauges look like this. What must happen around this pressure?

- A The harmonic balancer valve should close.
- B The foot valve should open.
- C The tractor protection valve should open.
- D The pressure safety valve should open.
- E None of the above.



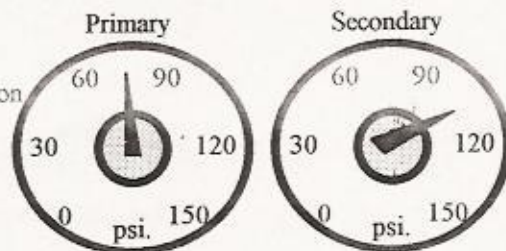
- 12 You are driving down the freeway & both the gauges are dropping. If they keep going down what should happen next:

- A The compressor should start pumping air.
- B The low air warning should turn on.
- C The pressure safety valve should close.
- D The compressor should stop pumping air.
- E All of the above.



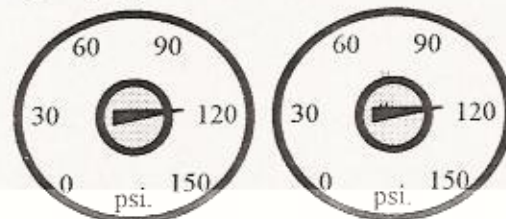
- 13 You are driving down the freeway & the PRIMARY gauge keeps DROPPING but the secondary gauge remains steady. What should happen next?

- A The pressure valve should open.
- B The low air warning light & buzzer should soon come on.
- C The tractor protection valve should close.
- D The spring brakes should come on right now.
- E The compressor should stop pumping air.



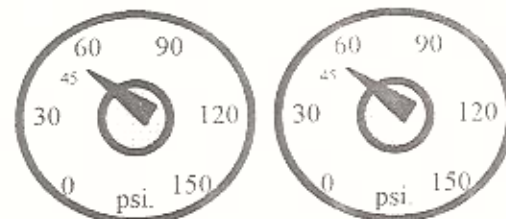
- 14 You are driving down the roadway & your primary & secondary air gauges look like this, it means?

- A The tractor protection valve should soon open.
- B The low air warning light should soon come on.
- C The compressor should soon stop pumping air.
- D The spring brakes should come on soon.
- E The pressure valve should open soon.



- 15 You are driving a tractor trailer down the highway. You are losing air pressure & both your air tank gauges look like this, in means?

- A The pressure valve should open soon.
- B The low air warning light should soon come on.
- C The compressor should stop pumping air.
- D The tractor spring brakes should come on soon.
- E The trailer spring brakes should come on soon.



- 16 A good compressor should be able to build up air pressure at fast idle from 85 psi. to 100 psi. in about:
- A 300 seconds
 - B 150 seconds
 - C 30 seconds
 - D 200 seconds
 - E 400 seconds
- 17 When the air comes out of the air compressor, the first tank the air goes into is:
- A The parking brake safety tank
 - B The primary dry tank.
 - C The secondary dry tank.
 - D The wet tank.
 - E The foot brake service tank
- 18 When the parking brakes are ON:
- A Air is put into the parking brake chamber
 - B Air is put back into the primary tanks to be re-used
 - C Air is removed from the parking brake chamber
 - D Air is put back into the secondary tanks to be re-used
 - E None of the above
- 19 The front wheels of all trucks & buses using an air brake system will have:
- A A spring brake safety chamber
 - B Dual brake safety chambers
 - C Always roto chambers in front for more power
 - D Any combination of the above, depending on the model of the truck or bus.
 - E Single brake chambers
- 20 The blue line from the tractor to the trailer:
- A Acts as a back up air supply line in case the red line comes off
 - B Tells the parking brakes on the trailer to come on
 - C Tells the service brakes (regular driving brakes) on the trailer to come on
 - D Transfers air from the tractor air tanks to the trailer air tanks
 - E Transfers air from the trailer to the tractor air tanks to be reused

